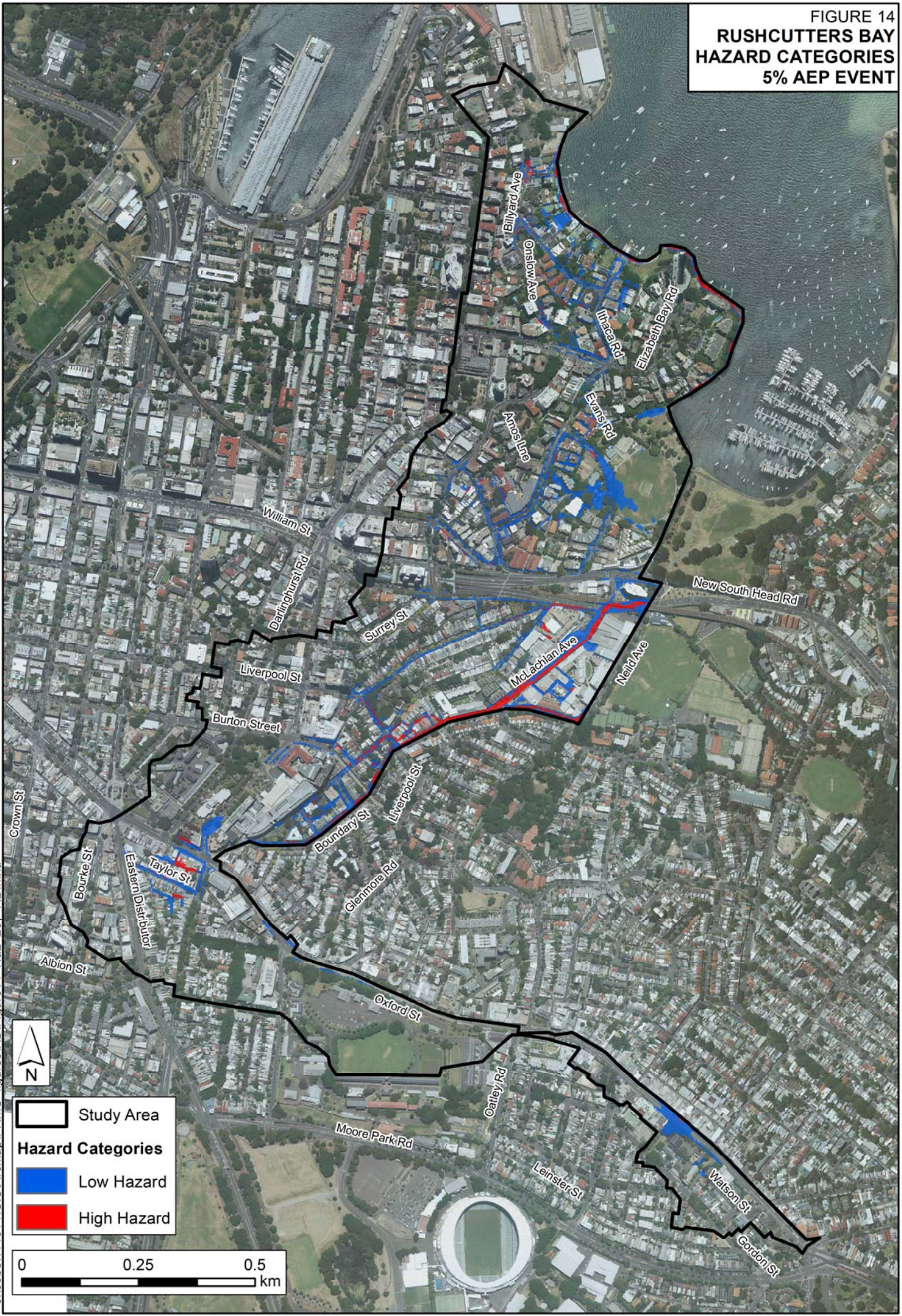


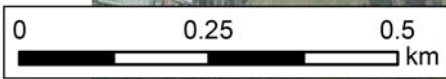
FIGURE 14  
**RUSHCUTTERS BAY  
 HAZARD CATEGORIES  
 5% AEP EVENT**



**Study Area**

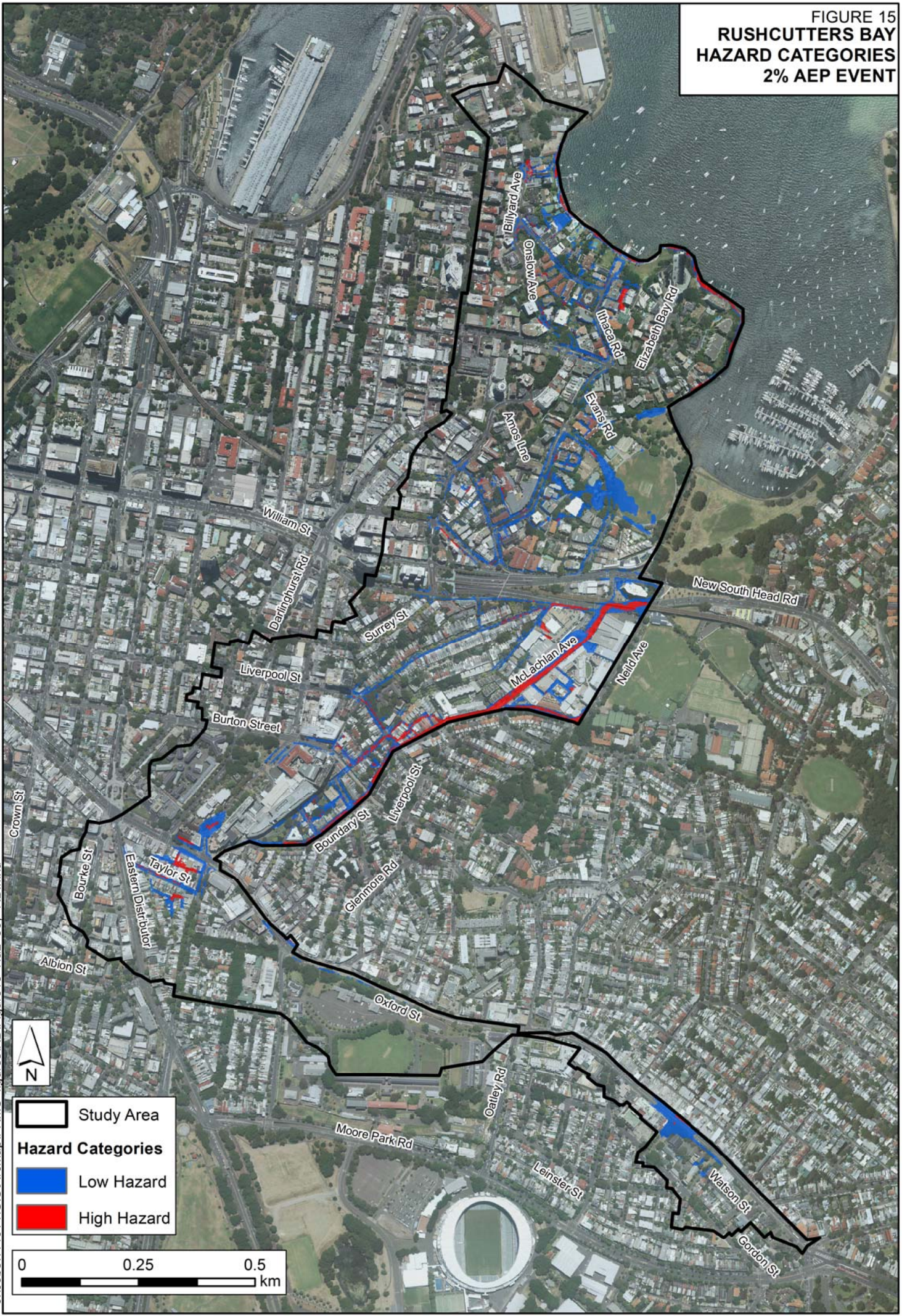
**Hazard Categories**

- Low Hazard
- High Hazard



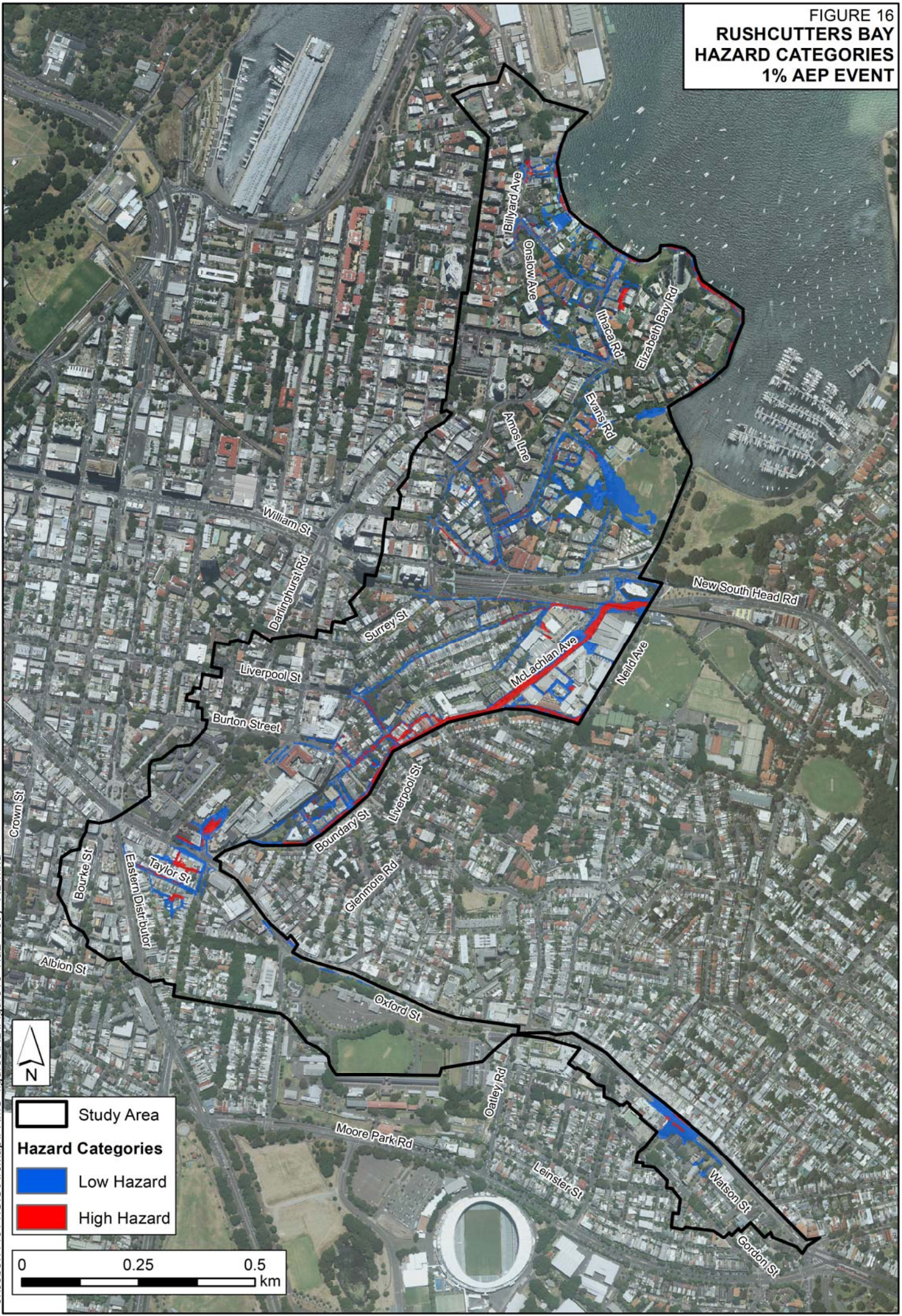
J:\Jobs\114014\GIS\ArcMap\FRMS\_figures\RB\Figure14\_Haz\_20y\_RB.mxd

FIGURE 15  
**RUSHCUTTERS BAY  
 HAZARD CATEGORIES  
 2% AEP EVENT**



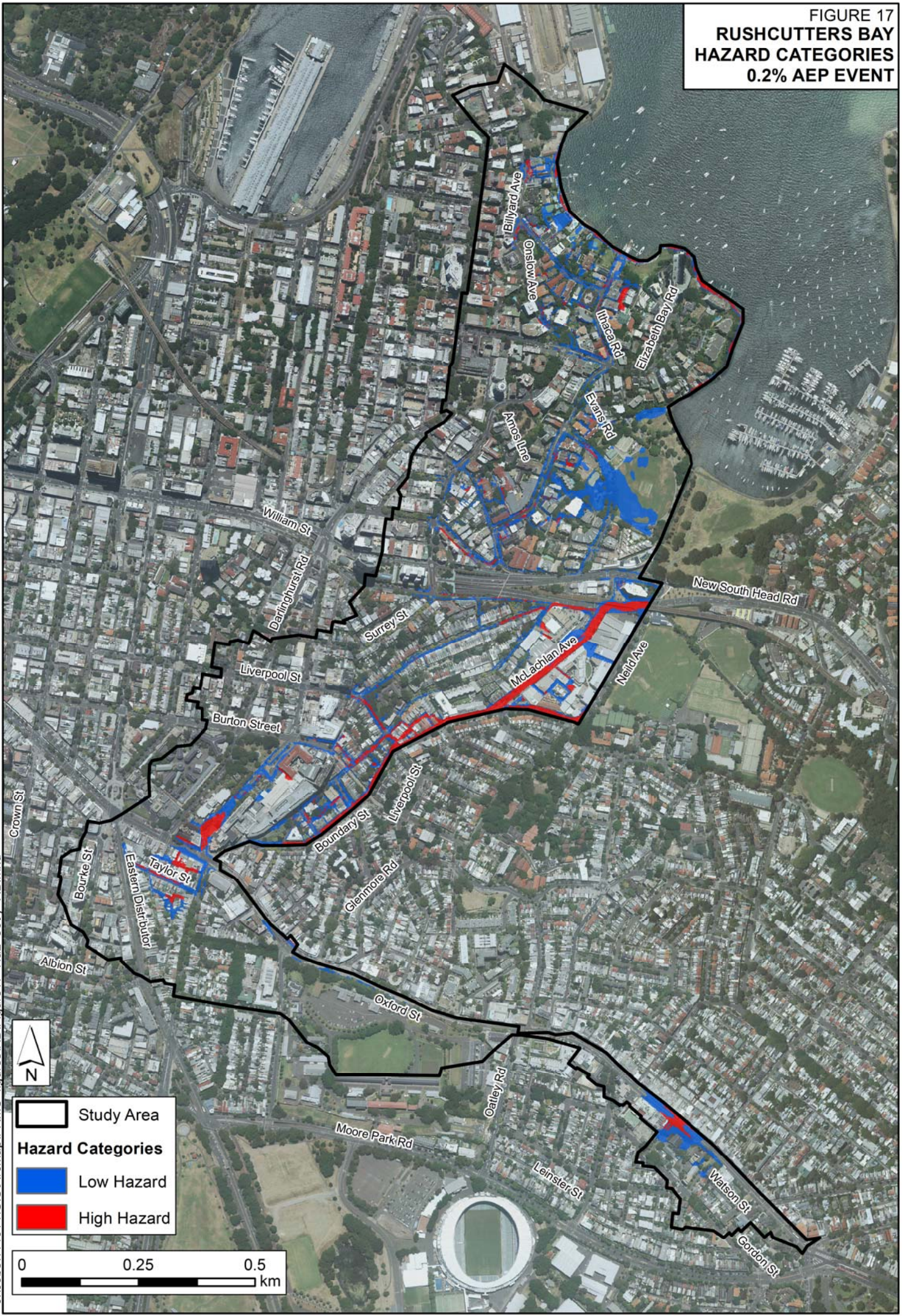
J:\Jobs\114014\GIS\ArcMap\FRMS\_figures\RB\Figure15\_Haz\_50y\_RB.mxd

FIGURE 16  
RUSHCUTTERS BAY  
HAZARD CATEGORIES  
1% AEP EVENT



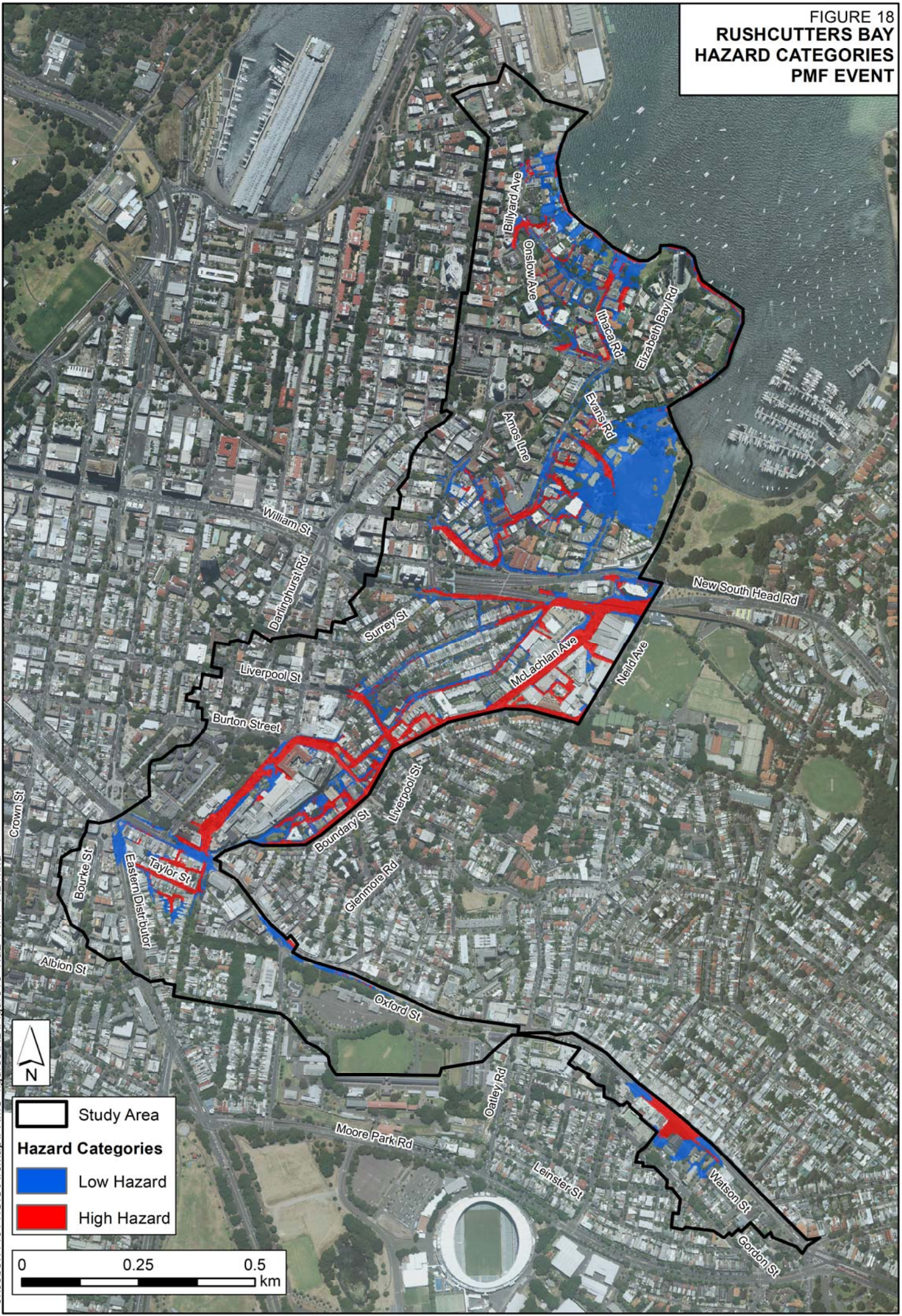
J:\Jobs\114014\GIS\ArcMap\FRMS\_figures\RB\Figure16\_Haz\_100y\_RB.mxd

FIGURE 17  
**RUSHCUTTERS BAY  
 HAZARD CATEGORIES  
 0.2% AEP EVENT**



J:\Jobs\114014\GIS\ArcMap\FRMS\_figures\RB\Figure17\_Haz\_500y\_RB.mxd

FIGURE 18  
RUSHCUTTERS BAY  
HAZARD CATEGORIES  
PMF EVENT



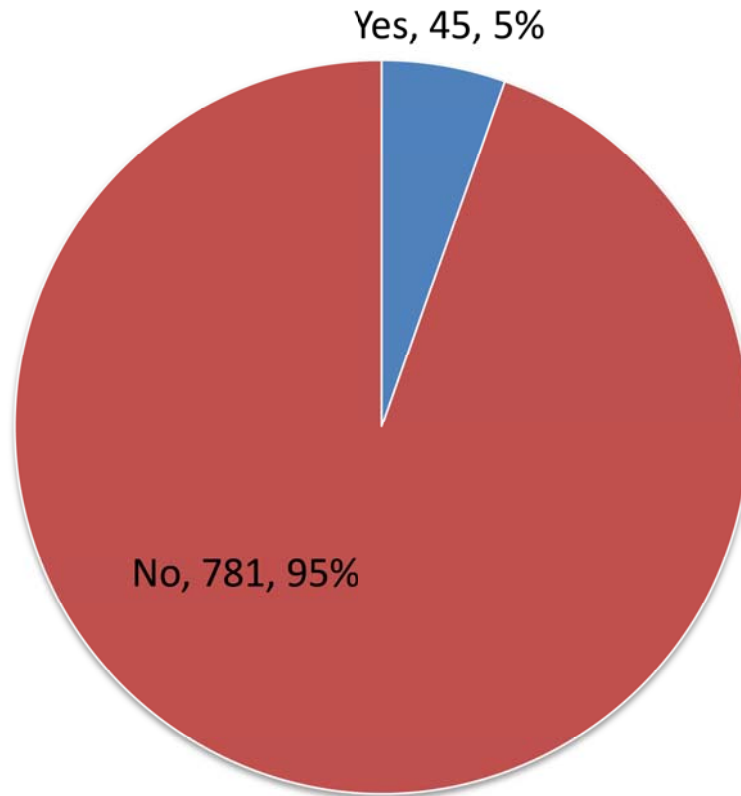
J:\Jobs\114014\GIS\ArcMap\FRMS\_figures\RB\Figure18\_Haz\_PMF\_RB.mxd

**RUSHCUTTERS BAY  
DURATION OF INUNDATION  
1% AEP EVENT**

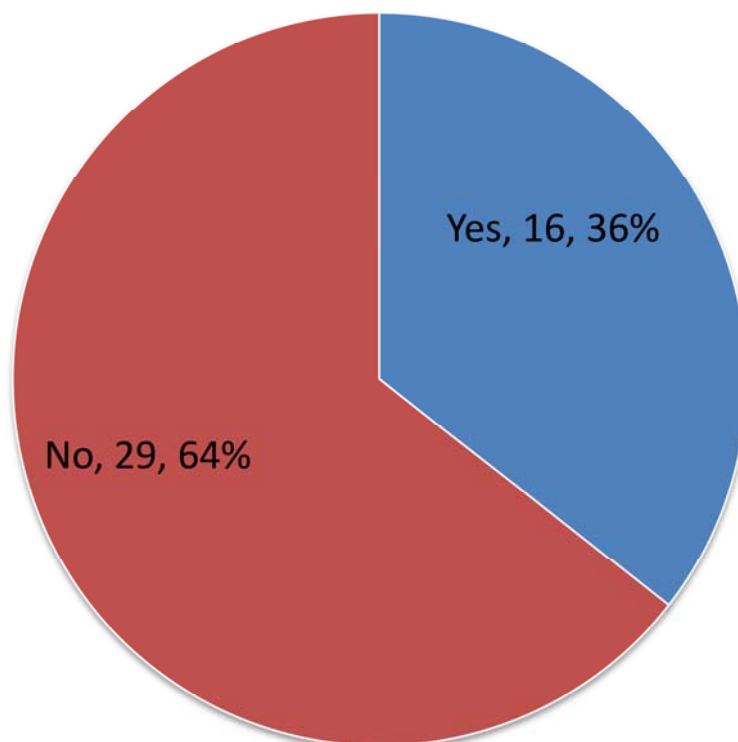
Note: Durations shown on this figure are for a 1% AEP design event duration of 1 hour. Duration of inundation will vary with other event durations.



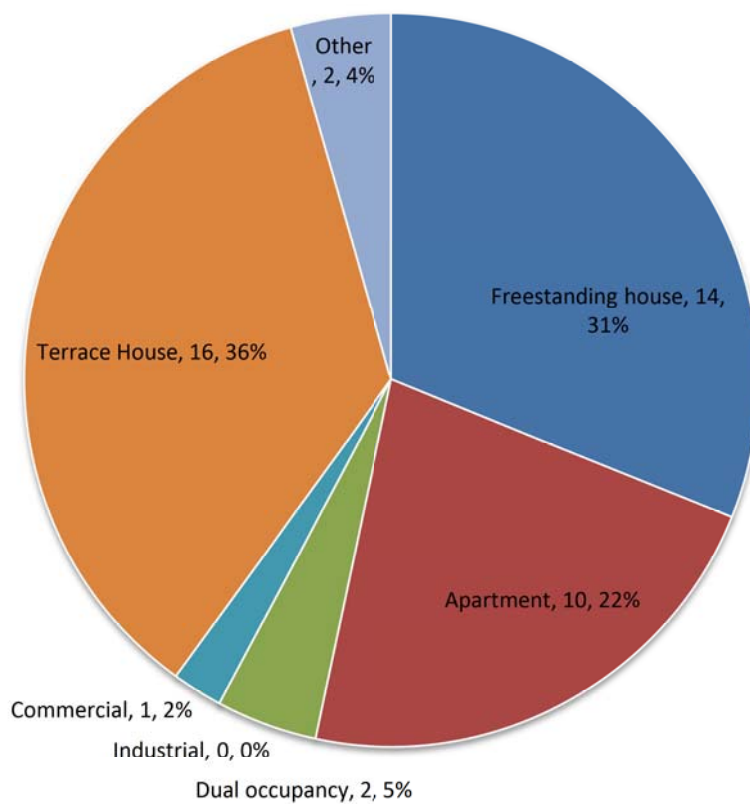
### A: Number of Respondents



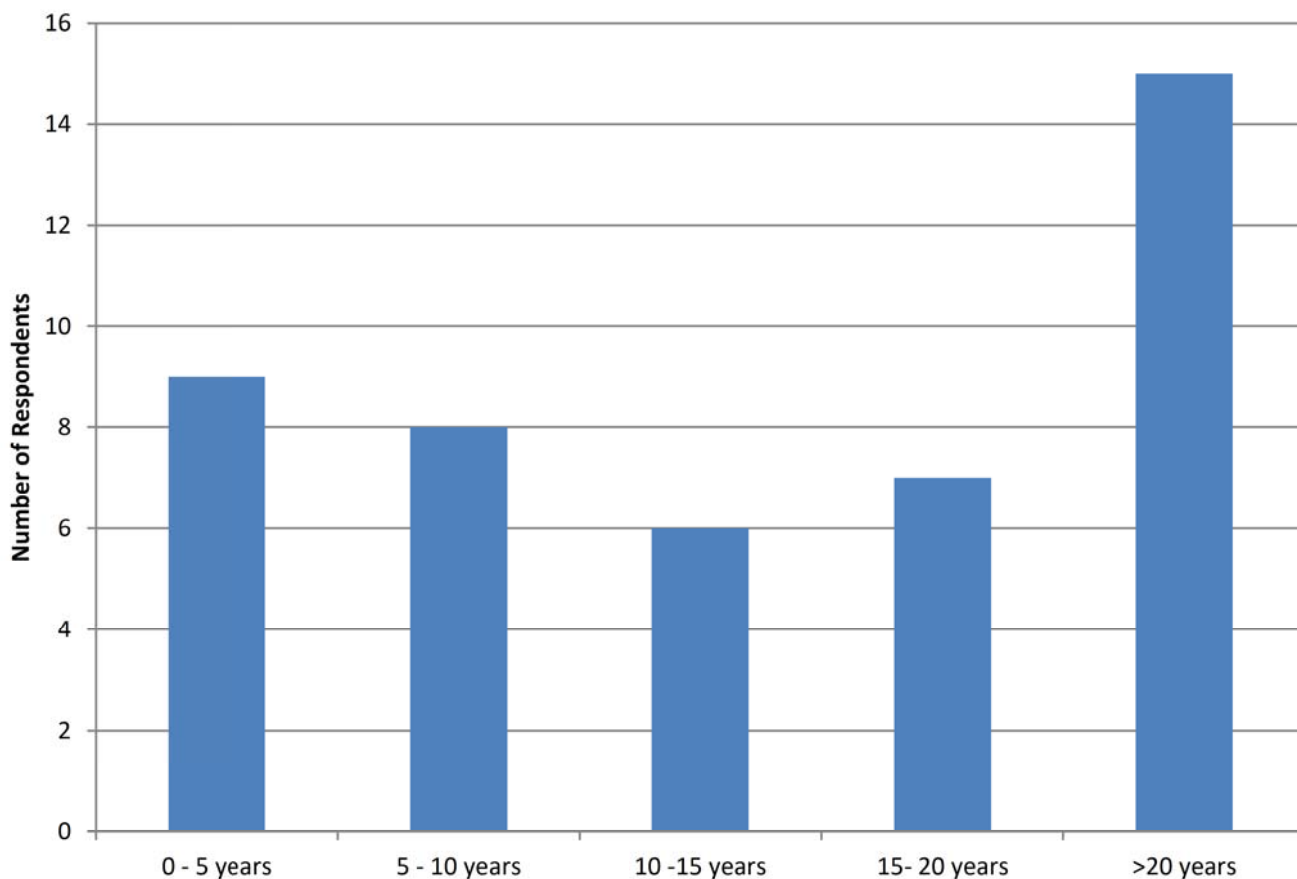
### B: Experienced Flooding



### C: Property Type

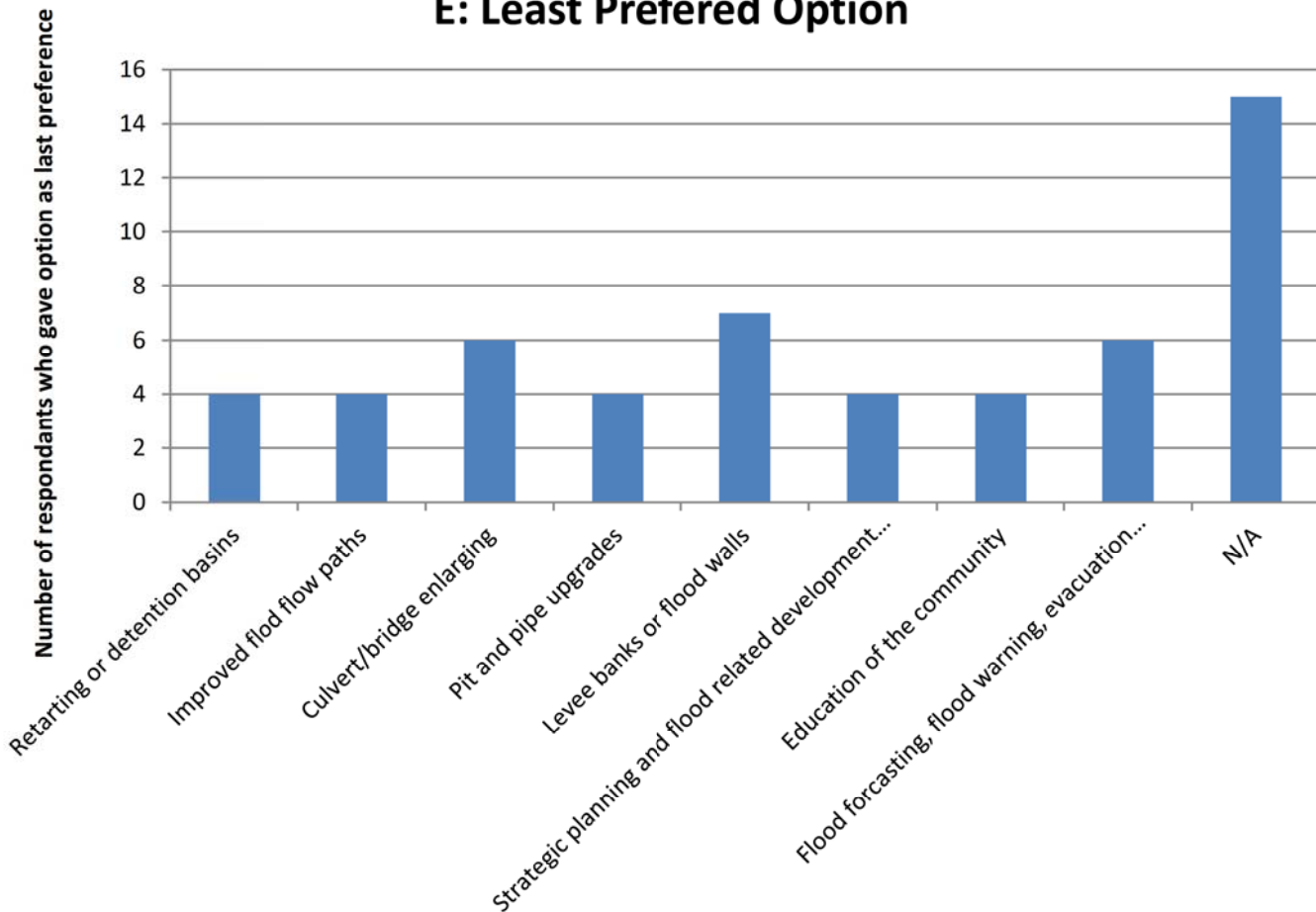


### D: Period of Living/Working/Owning Property

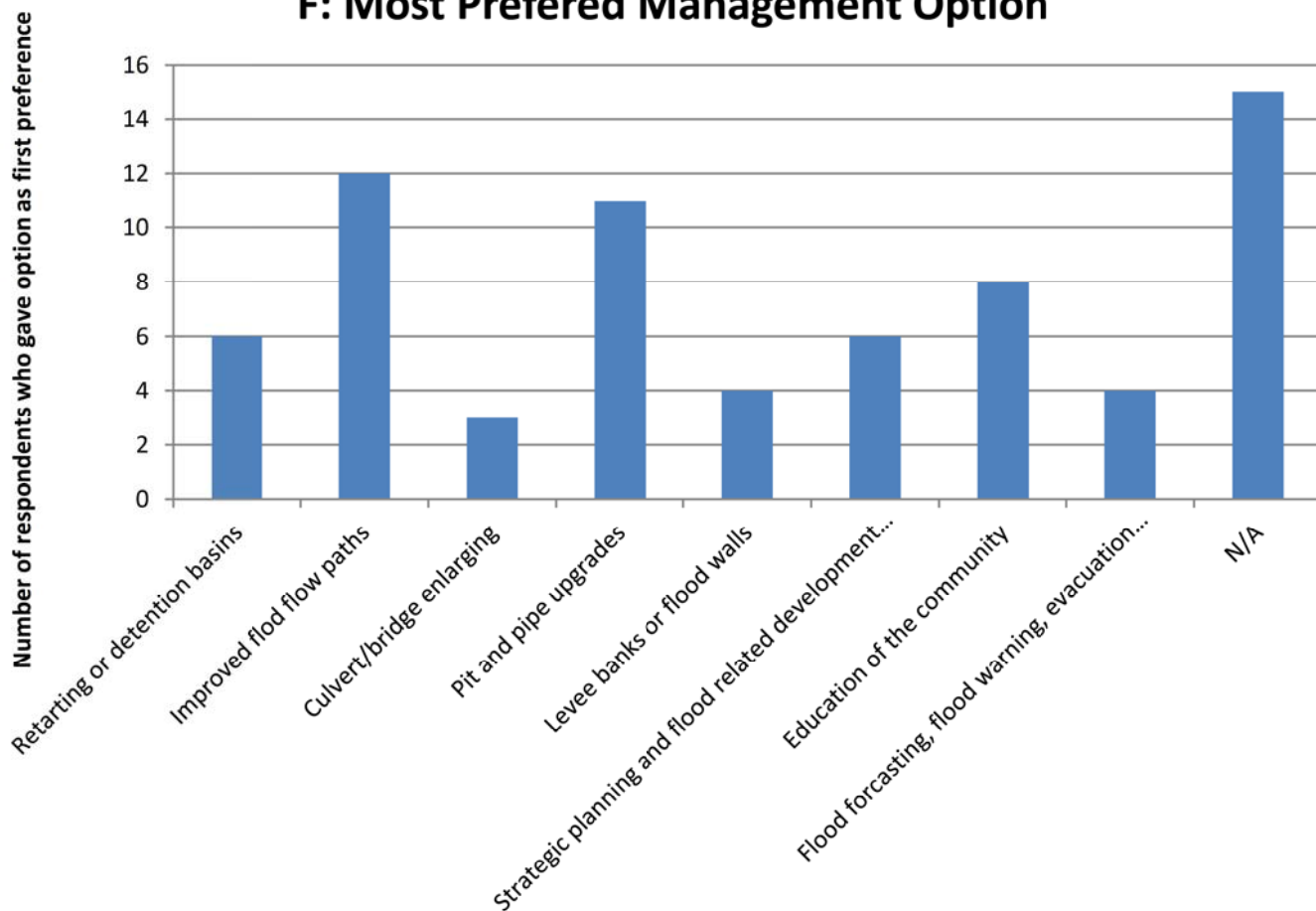




**E: Least Preferred Option**



**F: Most Preferred Management Option**



### G: Location of Flooding Experienced

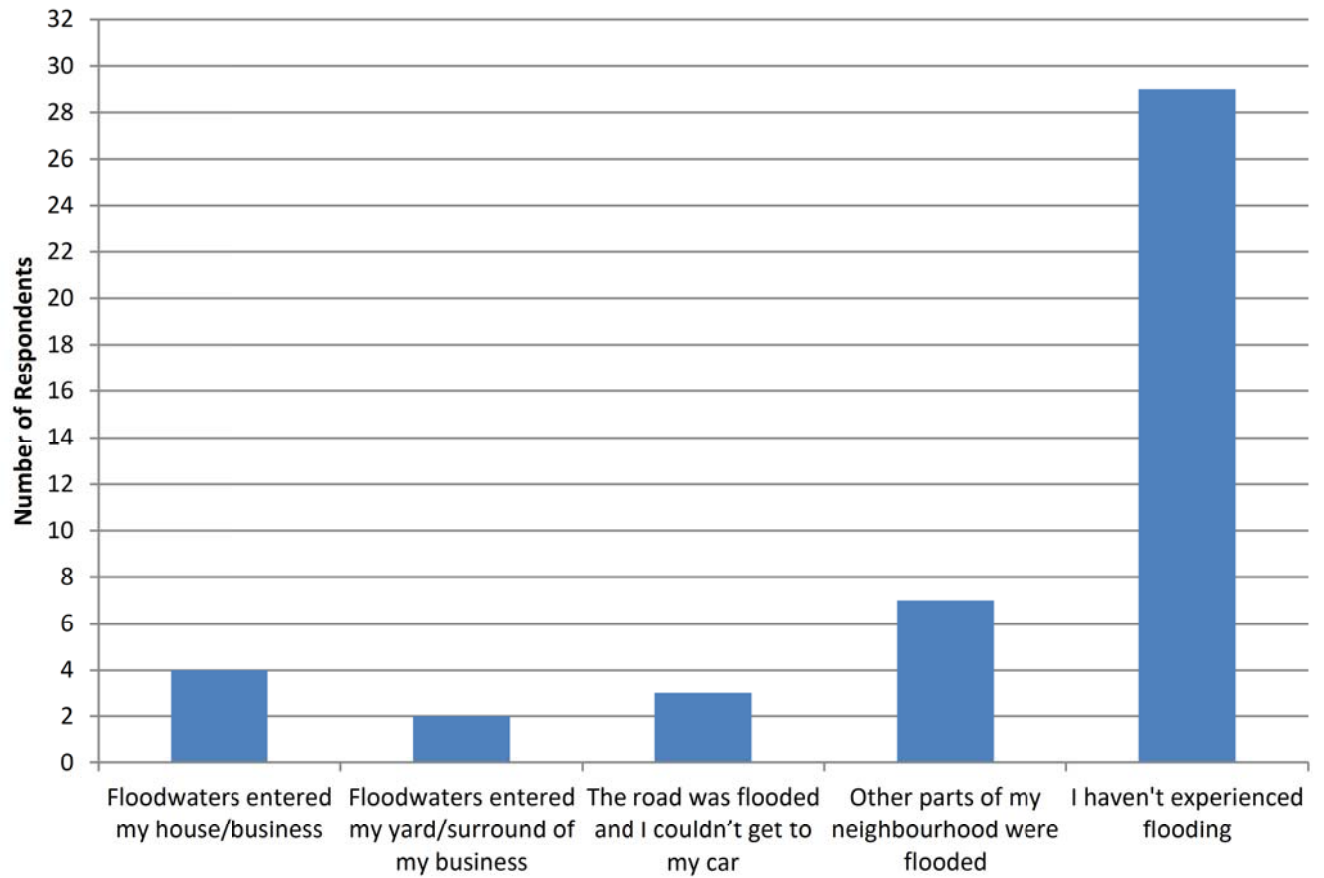


FIGURE 21  
RUSHCUTTERS BAY  
OVER FLOOR FLOOD LIABILITY

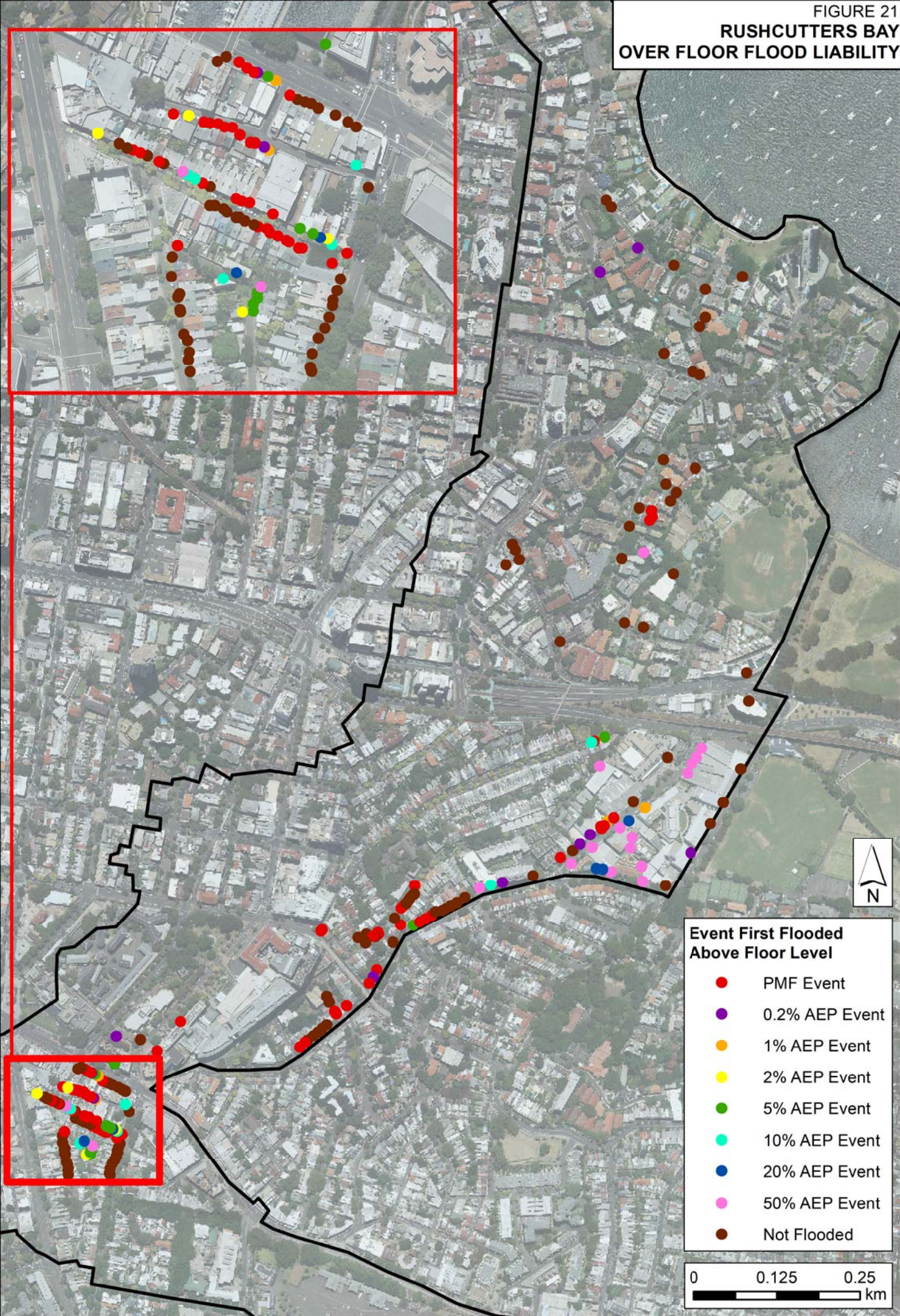
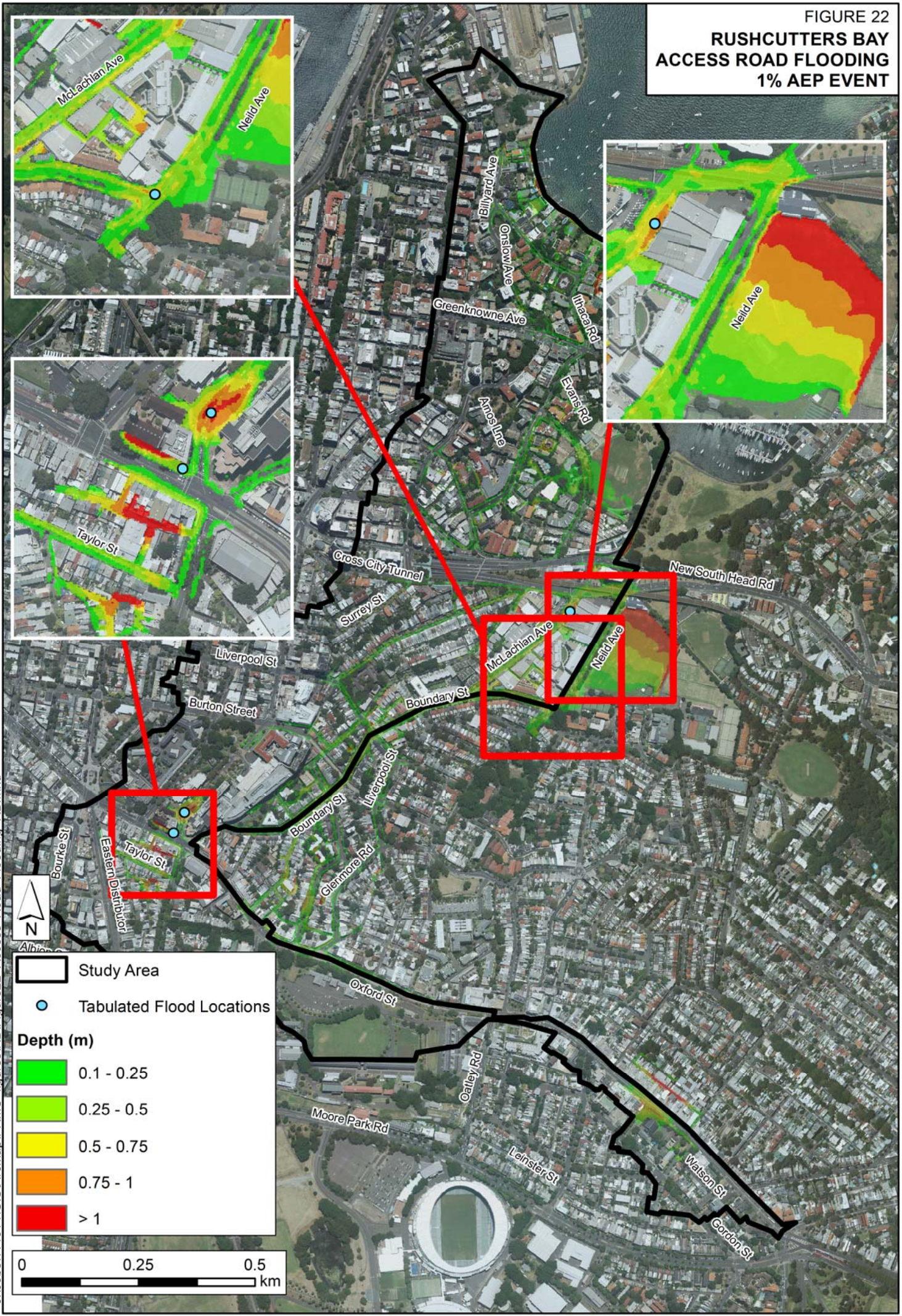


FIGURE 22  
**RUSHCUTTERS BAY  
 ACCESS ROAD FLOODING  
 1% AEP EVENT**



J:\Jobs\114014\GIS\ArcMap\FRMS\_figures\RB\Figure22\_Access\_Road\_Flooding\_RB.mxd

FIGURE 23  
**RUSHCUTTERS BAY  
 FLOOD RISK MITIGATION  
 MANAGEMENT OPTIONS**

**FM-RB05: Drainage Upgrade**  
 - Upgrade capacity of drainage pipes on Victoria Street

**FM-RB02: Drainage Upgrade**  
 - Upgrade capacity of trunk drainage along Boundary Street and Neil Avenue, outlet into Weigall Sportsground

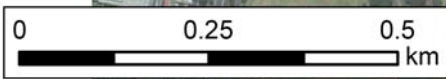
**FM-RB01: Drainage Upgrade**  
 - Upgrade capacity of trunk drainage along Boundary Street, Neild Avenue and McLachlan Avenue

**FM-RB04: Drainage Upgrade**  
 - Upgrade capacity of trunk drainage from Taylor Street to Neild Avenue, outlet into Weigall Sportsground

**FM-RB03: Drainage Upgrade**  
 - Upgrade capacity of drainage pipes on Taylor Street



Study Area  
 Upgraded Pipes



J:\Jobs\114014\GIS\ArcMap\FRMS\_figures\RB\Figure23\_MitigationOptions.mxd

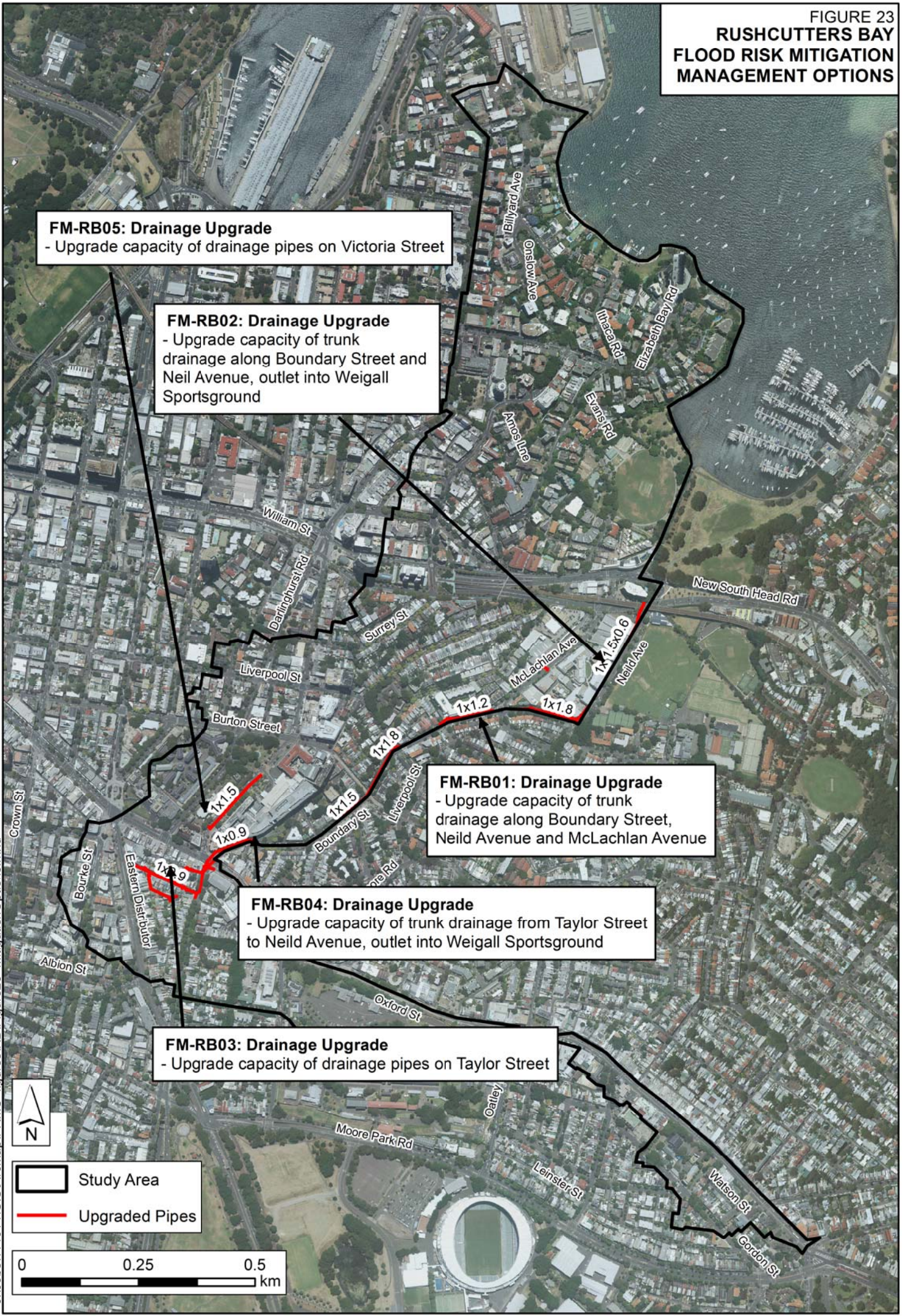


FIGURE 24  
BOUNDARY STREET HOTSPOT  
1% AEP EVENT

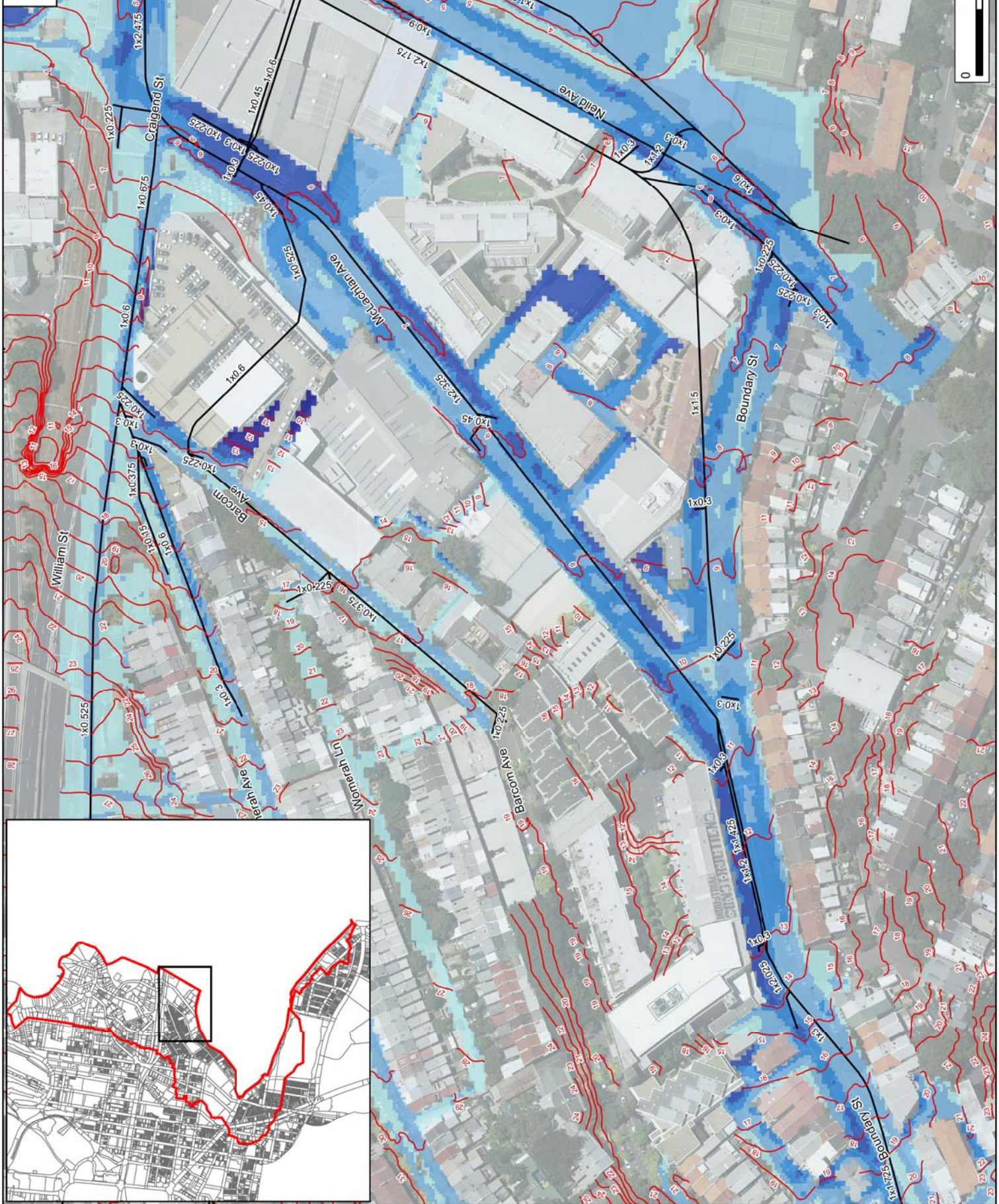
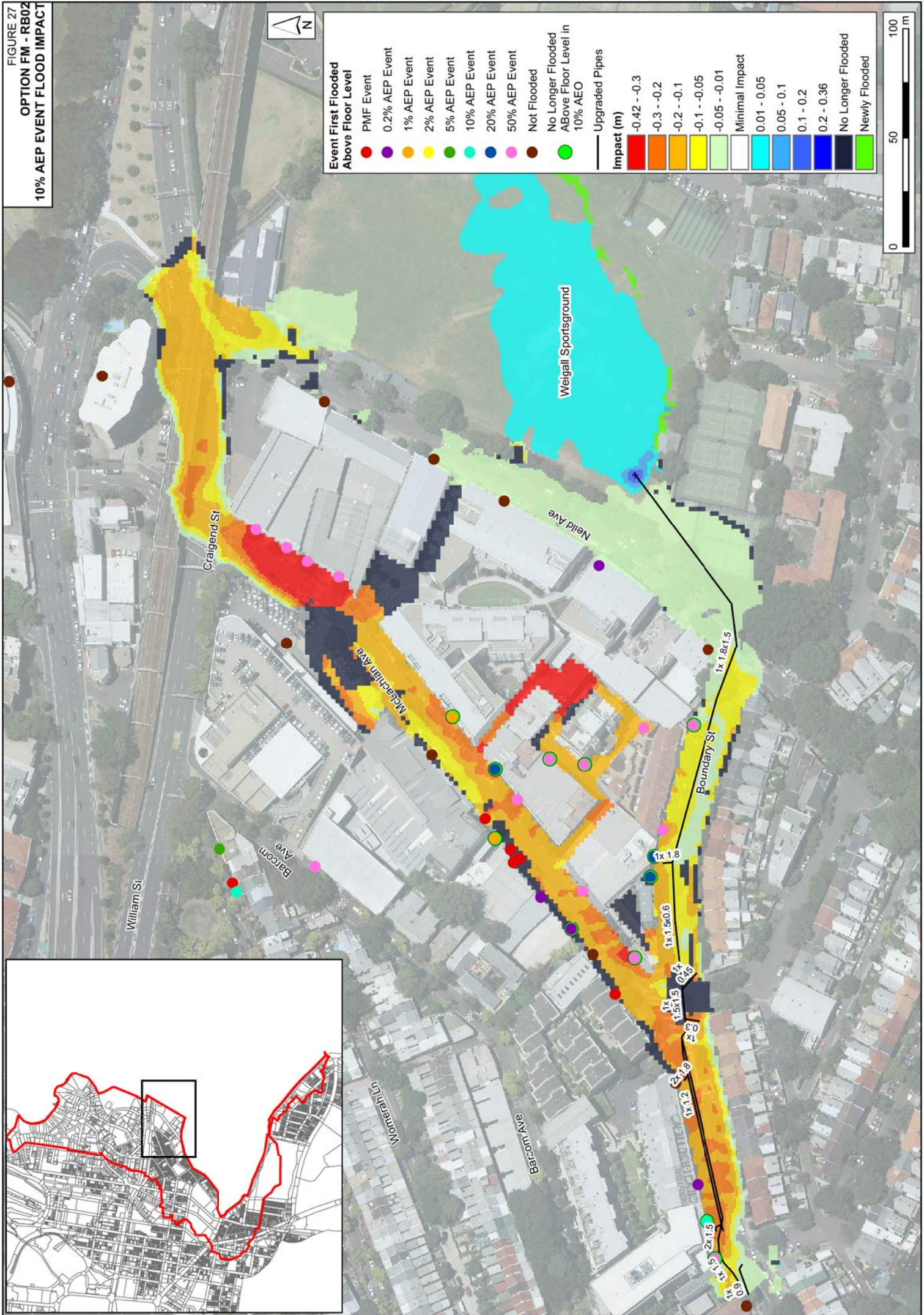








FIGURE 27  
 OPTION FM - RB02  
 10% AEP EVENT FLOOD IMPACT



| Event First Flooded Above Floor Level |  |
|---------------------------------------|--|
| ●                                     | PMF Event                                      |
| ●                                     | 0.2% AEP Event                                 |
| ●                                     | 1% AEP Event                                   |
| ●                                     | 2% AEP Event                                   |
| ●                                     | 5% AEP Event                                   |
| ●                                     | 10% AEP Event                                  |
| ●                                     | 20% AEP Event                                  |
| ●                                     | 50% AEP Event                                  |
| ●                                     | Not Flooded                                    |
| ●                                     | No Longer Flooded ABOVE Floor Level in 10% AEO |

| Impact (m) |                   |
|------------|-------------------|
| ■          | -0.42 - -0.3      |
| ■          | -0.3 - -0.2       |
| ■          | -0.2 - -0.1       |
| ■          | -0.1 - -0.05      |
| ■          | -0.05 - -0.01     |
| ■          | Minimal Impact    |
| ■          | 0.01 - 0.05       |
| ■          | 0.05 - 0.1        |
| ■          | 0.1 - 0.2         |
| ■          | 0.2 - 0.36        |
| ■          | No Longer Flooded |
| ■          | Newly Flooded     |

| Upgraded Pipes |            |
|----------------|------------|
| —              | 1x 1.8x1.5 |
| —              | 1x 1.8     |
| —              | 1x 1.5x0.6 |
| —              | 1x 1.5x1.5 |
| —              | 1x 1.5x1.5 |
| —              | 1x 1.2     |
| —              | 2x 1.0     |
| —              | 1x 1.5     |
| —              | 2x 1.5     |

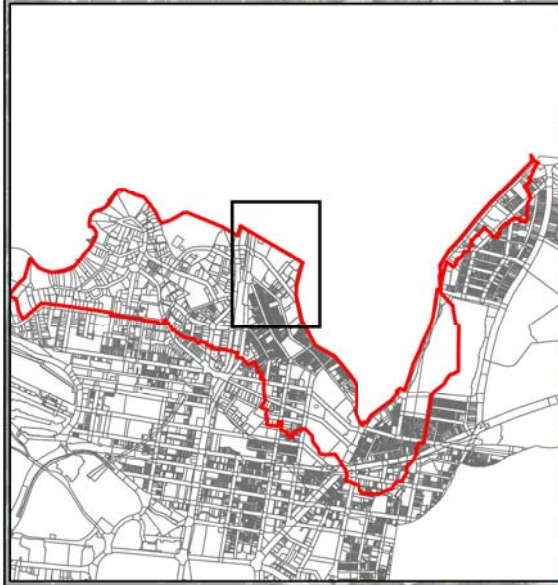
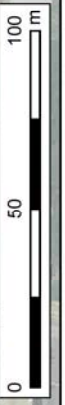
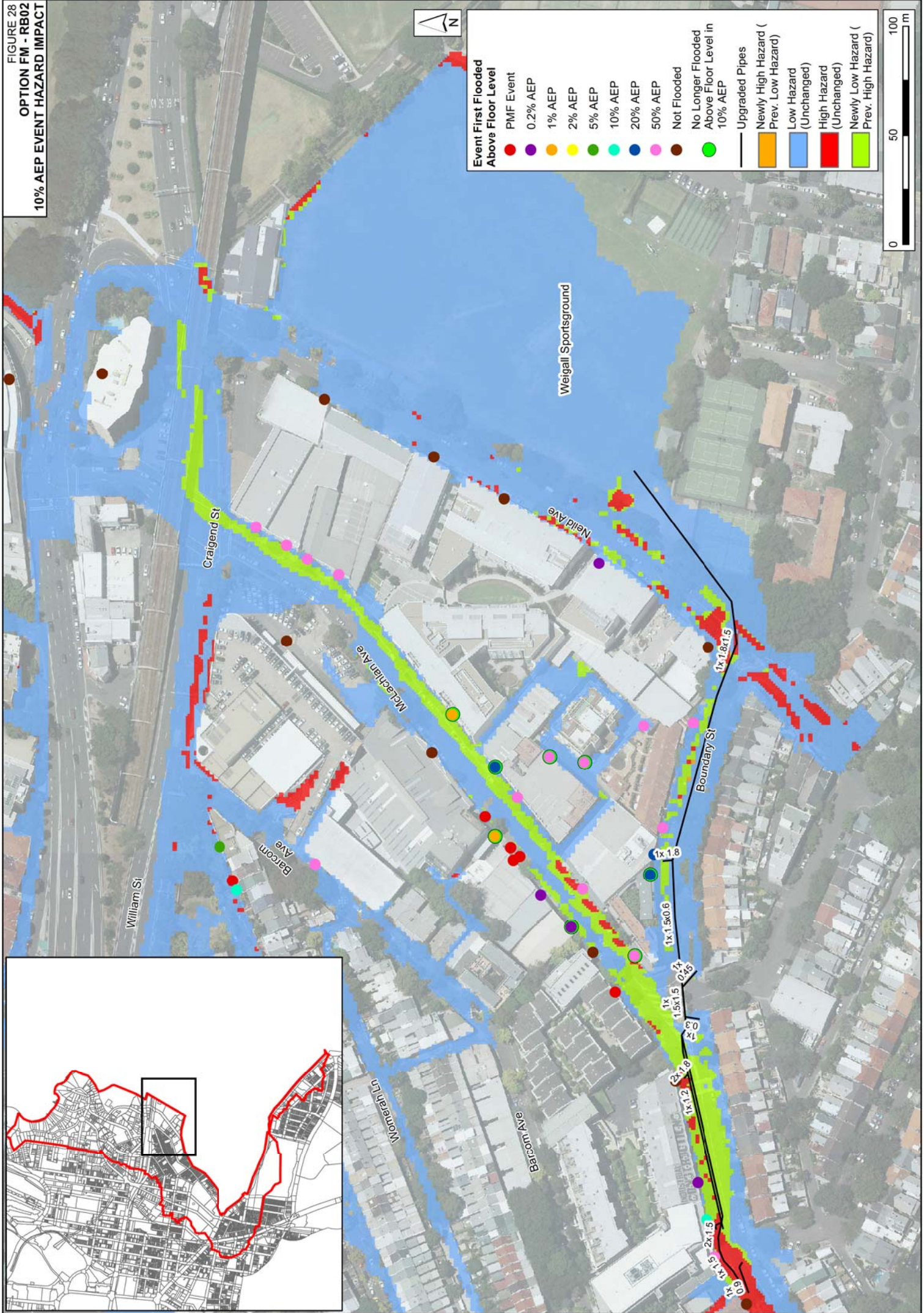


FIGURE 28  
 OPTION FM - RB02  
 10% AEP EVENT HAZARD IMPACT



- Event First Flooded Above Floor Level**
- PMF Event
  - 0.2% AEP
  - 1% AEP
  - 2% AEP
  - 5% AEP
  - 10% AEP
  - 20% AEP
  - 50% AEP
  - Not Flooded
  - No Longer Flooded Above Floor Level in 10% AEP
- Upgraded Pipes**
- Newly High Hazard (Prev. Low Hazard)
  - Low Hazard (Unchanged)
  - High Hazard (Unchanged)
  - Newly Low Hazard (Prev. High Hazard)



FIGURE 29  
TAYLOR STREET HOTSPOT  
1% AEP EVENT

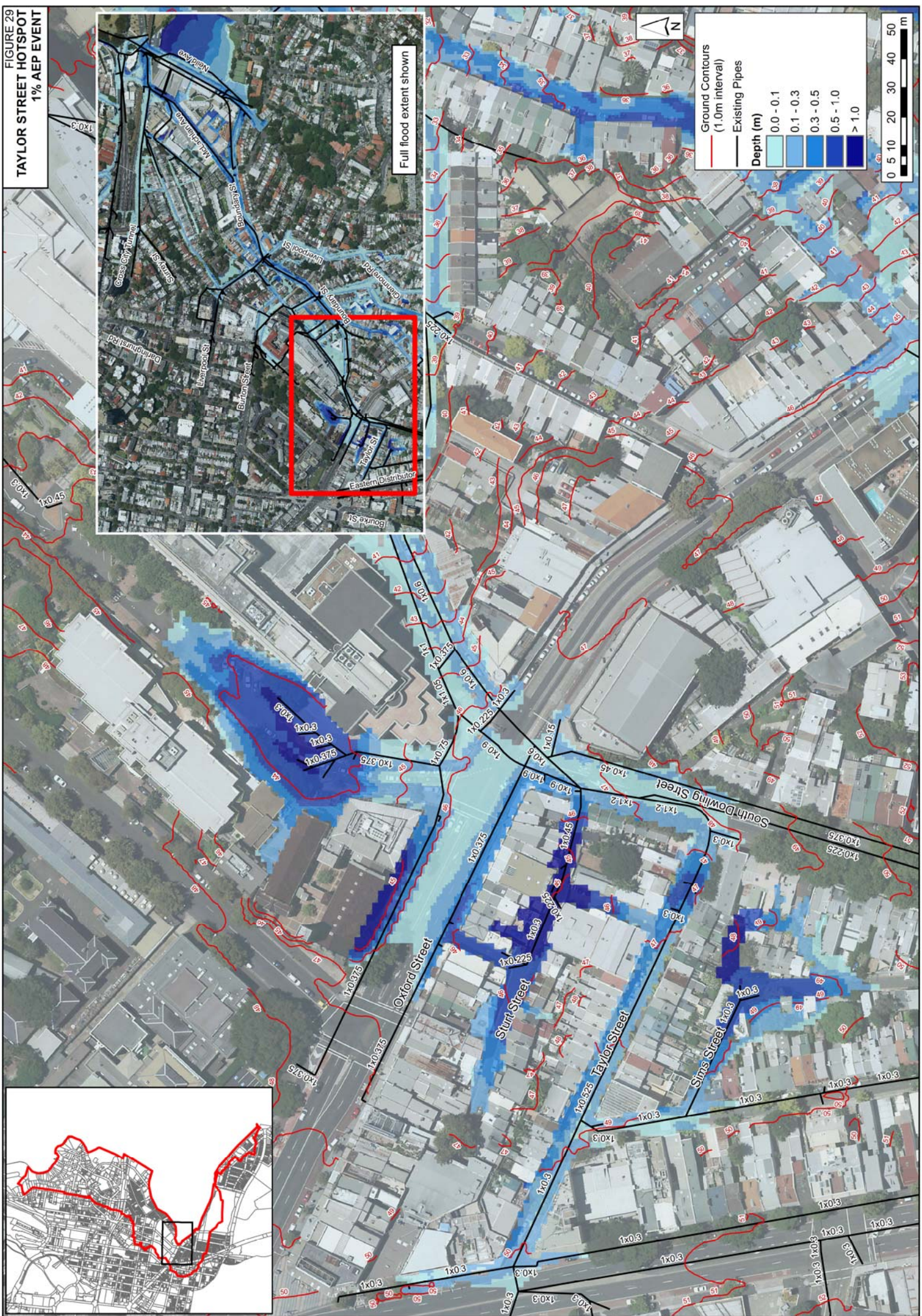
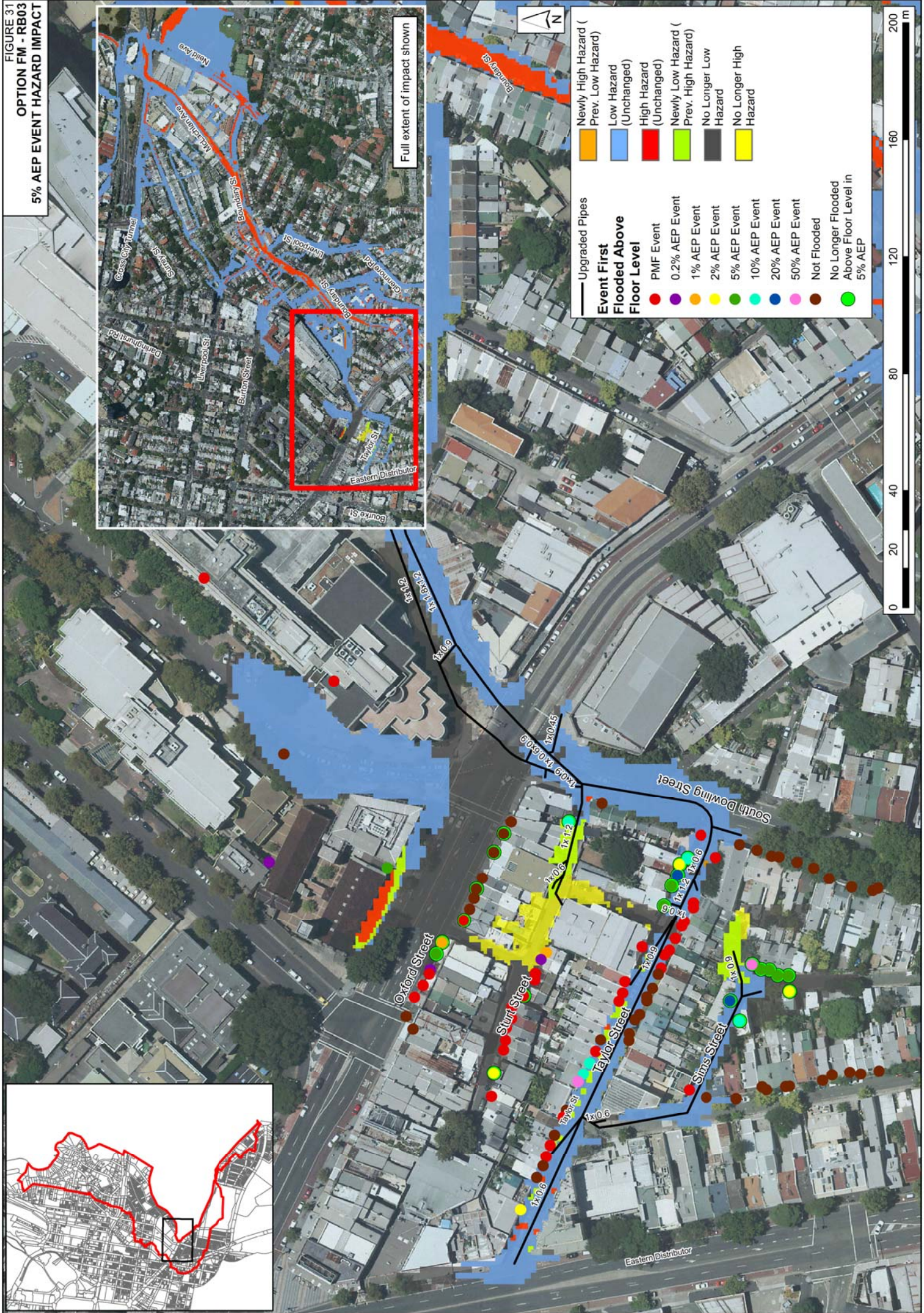


FIGURE 30  
**OPTION FM - RB03**  
**5% AEP EVENT FLOOD IMPACT**



FIGURE 31  
 OPTION FM - RB03  
 5% AEP EVENT HAZARD IMPACT



|  |   |
|--|---|
|  | Upgraded Pipes                                |
|  | Event First Flooded Above Floor Level         |
|  | PMF Event                                     |
|  | 0.2% AEP Event                                |
|  | 1% AEP Event                                  |
|  | 2% AEP Event                                  |
|  | 5% AEP Event                                  |
|  | 10% AEP Event                                 |
|  | 20% AEP Event                                 |
|  | 50% AEP Event                                 |
|  | Not Flooded                                   |
|  | No Longer Flooded Above Floor Level in 5% AEP |
|  | Newly High Hazard (Prev. Low Hazard)          |
|  | Low Hazard (Unchanged)                        |
|  | High Hazard (Unchanged)                       |
|  | Newly Low Hazard (Prev. High Hazard)          |
|  | No Longer Low Hazard                          |
|  | No Longer High Hazard                         |



